

# Evidence

Laboratory information management system.

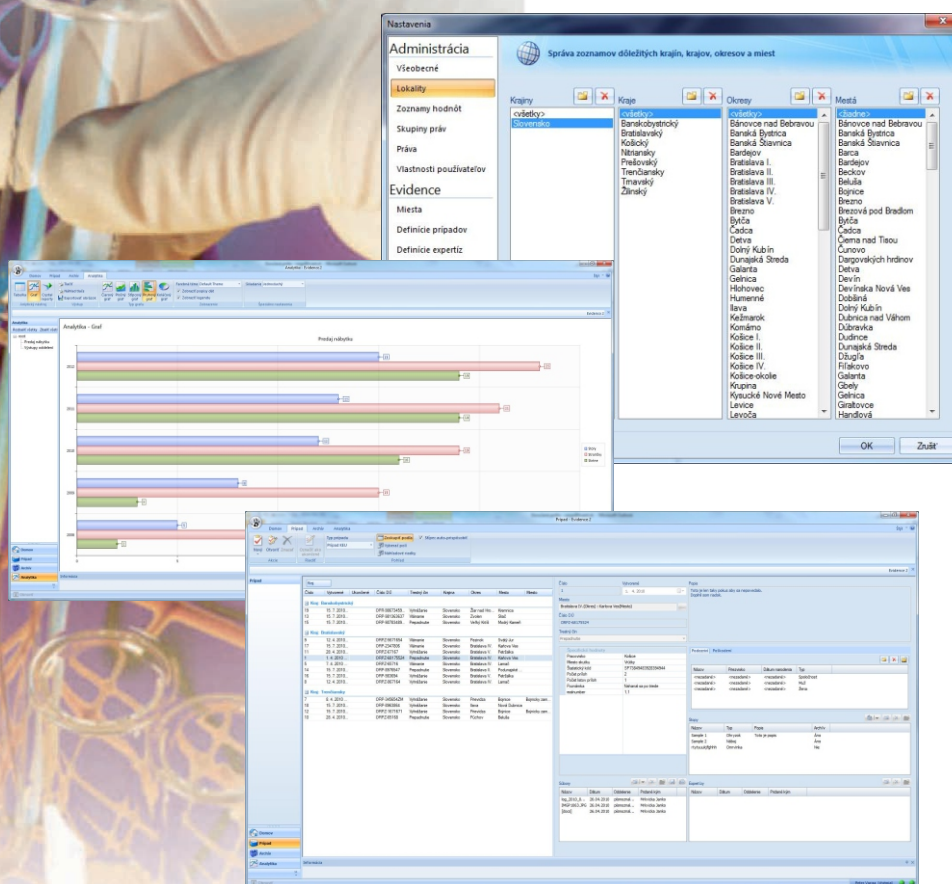


**Evidence 2** is innovative, affordable and reliable information system, ready to help you out with your everyday laboratory work.

## LIMS

Automation in the laboratory has created a demand for similar automation of information management with faster turnaround of data and increased access to information resources. Within the past decade, implementation of new, computerized information management systems designed to meet these needs has forced laboratories to confront the challenge of changing the way they do business. In the generic sense, the LIMS is how a laboratory tracks and manages its information resources, particularly the data that represents the laboratory's product.

Three major functional areas of the LIMS illustrate the relationship between the information management system and the other management processes in the laboratory. The first, sample tracking, demonstrates that the appropriate work is properly completed and that the workload is properly managed. This is a multistage chain of custody tracked by sophisticated barcoding equipment. Second, the sample analysis must be documented, and sufficient raw data must be maintained to reconstruct and defend the result. Finally, these results must be organized and reported in a manner that is understandable and meets the requirements of the end user.



## Simple Implementation

Simplicity of implementation is the key feature of our product. Implementation of LIMS systems is usually very stressful for the laboratory staff. Resistance to change may be the biggest cause of failure in implementing any new system.

The important planning stage provides an opportunity to anticipate problems and educate the users on the project. We came up with new approach, which lets the administrator customize most of the laboratory information management systems without knowing inner code of the system or any other than basic administration knowledge.

The system administrator needs to be sufficiently trained in information technology to be able to install, configure, and manage the LIMS and supporting hardware. Trainings can take place in our training center or even at customer's premises.

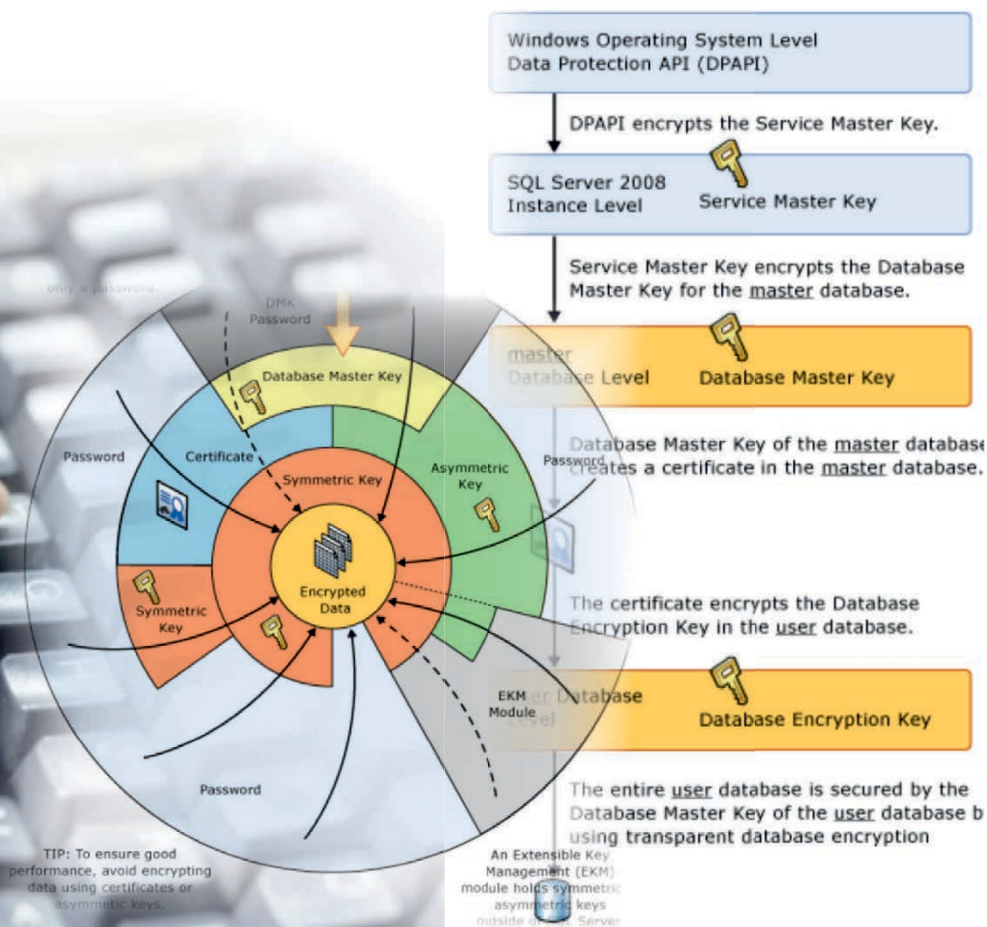


## Data protection

Data protection in Evidence is represented by the newest hardware and software technologies. This includes transparent data encryption for communication and data storage.

Preprogrammed are backup plans running automatically on the server side. Backups encrypted. Naturally all servers are battery backed up by uninterruptible power supplies. On the software side there is ALS (automated logging system) which is keeping track on all user's steps.

### Transparent Database Encryption Architecture



## Outstanding performance

Evidence has been optimized for more than 15 years and development team is implementing new features every day.

System is ready to launch on minimum configuration with small band width request on network connection.

There is significant increase in volume of processed samples, reduction of average time process and speeding up the whole process starting receiving sample for testing, ending issuing the final reports. Evidence has been developed in compliance with ISO 9001, ISO 17025, Good Laboratory Practice (GLP).



## Innovative

Evidence is innovative in every aspect of its approach to laboratory work. Includes features such as BIS (built in image shooting) which allows user to connect the digital camera with an instant preview of the sample and store the raw image data in the database. There is no need to manipulate the camera manually, everything can be controlled remotely by the keyboard and mouse.

Another interesting feature is biometric sensors capability which are becoming more affordable. We use them not only for safer login to the system but also for speeding up the process of taking over samples from one owner to another. Administrator login is two tier based, where the second tier is represented by randomly generated code send by text message to administrator's mobile phone.

No need to be worried about small samples any longer. Our system is able to generate the smallest 2D barcodes possible, which goes up to 5x5mm. Generating of the linear and 2D barcodes is implemented directly in the system, including connection to Zebra compatible printers. For security reasons barcodes do not carry any information about the sample and they need to be paired with the control barcode as well.

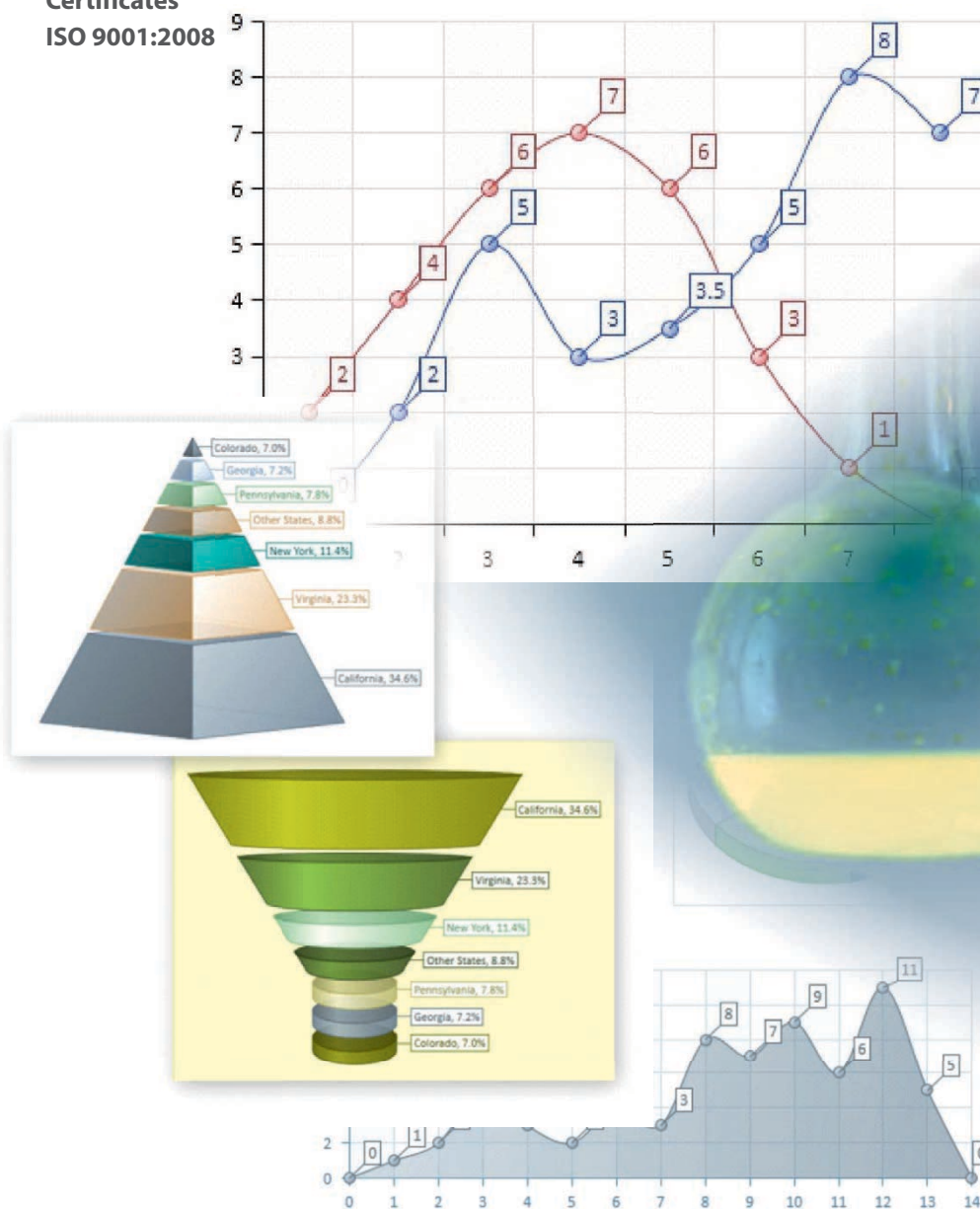
User interface meets the requirements of modern processing. Depending on the logged in user and his rights there are system functions enabled or disabled. The time needed to get to know the system is reduced by the fact that Evidence2 uses familiar ribbon user interface of Microsoft Office.



## Results representation

Unique in the system Evidence2 is the representation of measured results and the actual analysis of data contained in the information system. For this purpose, we implemented many easy to use functions. This includes instant reporting, customizable graphs and tables. Output reports can be created and modified by the system administrator. The final reports can be generated and digitally signed right after the work is finished. There are webservice to communicate with the third-party systems, which can deliver reports to them immediately. There is also new dashboard feature with the key performance indicators (KPI).

### Certificates ISO 9001:2008



Company **KVANT Ltd.** has been established in 1995. During its existence the company has achieved significant success in development and production of its own products as well as in distribution of technical devices to different areas of science, research, industry and education. The company has carried several awards at the exhibitions. Company exports more than a half of its production to more than 50 countries all around the world.

Since 2004 has the company introduced the system ISO 9001:2000, since 2008 ISO 9001:2008 since 2015 ISO 9001:2015, ISO 9001:2018 since 2019.

Certificate Environmental Management ISO 14001 and safety management system OHSAS ISO 18001 and since 2016 ISO 27001, Information Security Management Systems.

Company KVANT Ltd. is the exclusive supplier of laboratory information management system LIMS Evidence for the Ministry of Interior of the Slovak republic since 2004.

**KVANT Ltd.**

FMFI UK Mlynska dolina  
842 48 Bratislava, SLOVAKIA  
Tel.: +421 2 602 97 810  
Fax: +421 2 602 97 813  
E-mail: [info@lims.sk](mailto:info@lims.sk)  
Web: [www.lims.sk](http://www.lims.sk)



**KVANT company reserves right of changes and mistakes in stated parameters, prices and information, which are content of this leaflet and website.**

The website [www.lims.sk](http://www.lims.sk) is operated by KVANT and its content is the property of KVANT Ltd., which is also entitled to use it.

Evidence is a registered trademark company KVANT Ltd. for the Laboratory Information Management System.

©2019 KVANT Ltd. All rights reserved.

